

EP·Ablation Catheter
Handbook
2024-2025



Product Website

2024
|
2025

Some models may not be approved in your country.
Please contact our local representatives for further information.

CABL-IT II



Features

- Less pop risk and constant power output with automatic power modulation.
- Switch between irrigation and conventional modes with one touch of a button.
- All settings besides output power and temperature are controlled with the MODE button.
- Interlock with irrigation pump (FLUSH control, and FLUSH/RUN mode flow rates can be adjusted).
- Remote control panel layout is identical with the generator.

Model No.	JCP-50
Frequency	450-550kHz
Power	AC100V 50/60Hz
Nominal Output	0.71A/50W
Output Setting	0-100VR.M.S
Size	W364×D331×H173mm
Weight	13.4kg

CABL-IT Pump

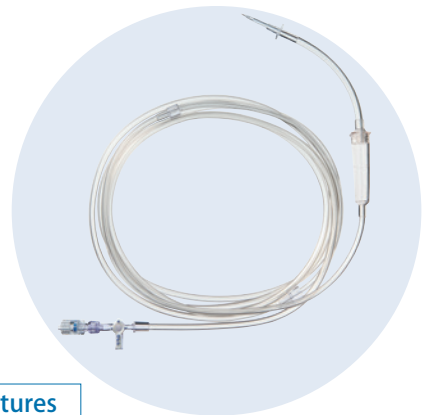


Features

- Auto adjustment of flow rate according to output power.
- Two air bubble sensors for enhanced safety.

Model No.	CP-1
Power	AC100V 50/60Hz
Size	W170×D160×H292mm
Weight	4.5kg
Flow Rate Settings	Under AUTO Mode: 5.30mL/min. [Adjusted in steps of 1mL/min.]

CP-1 Tubing set



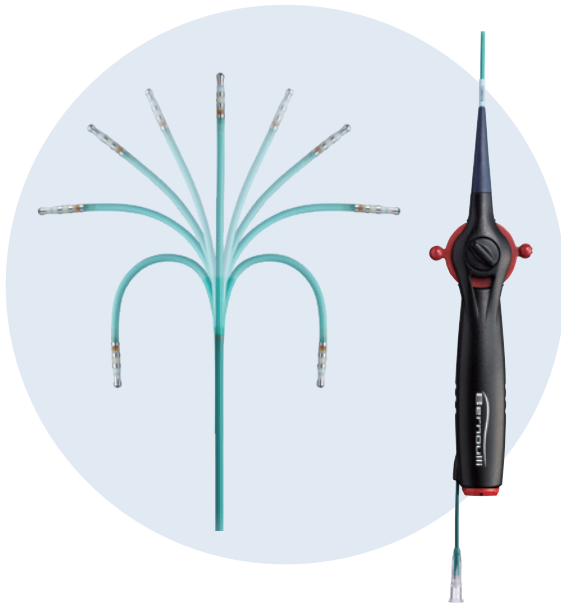
Features

- Three-way stopcock and lure are both set in advance for simple installment.

Model No.	CPT-240	CPT-160
Full Length	310cm	310cm
Usable Length	240cm	160cm

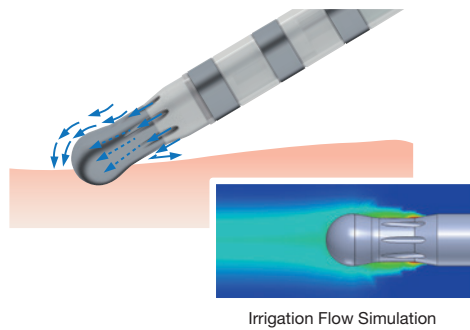
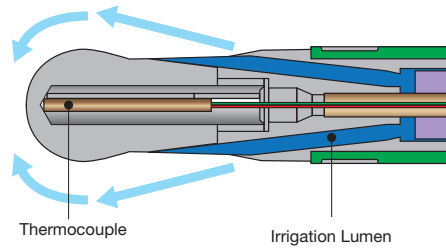
Ablaze Bernoulli

Bi-Directional



Features

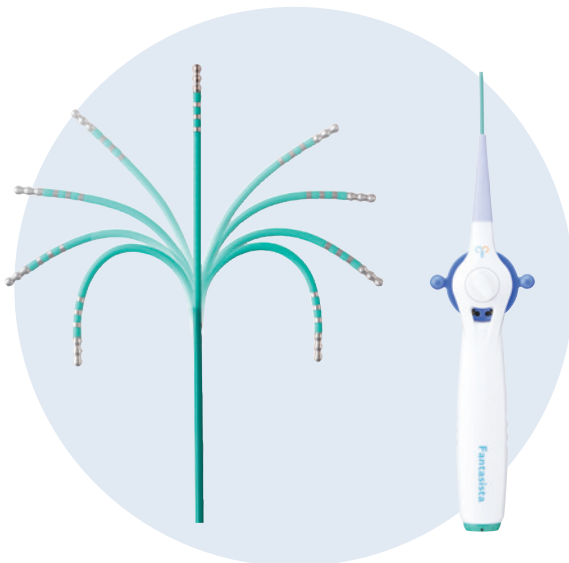
- Exclusive External Cooling System, saline is ejected from the proximal end of the catheter distal tip.
- Adequate temperature response is achieved by non-direct cooling of the thermocouple.
- Complete irrigation flow coverage of the distal tip.



Model No.	Type	Curve	Diameter (mm)	Distal Tip (mm)	Other Electrode(s) Width(mm)	Electrode Spacing(mm)	Usable Length (cm)	Recommended Sheath Size(F)
BRN-4MM	MM	34	4	1.2	2-2-2	110	8	

Ablaze Fantasista

Bi-Directional



Features

- Bi-Directional
- Stiffer shaft compared to Ablaze series.
- Soft distal shaft: SS/MM models, Stiff distal shaft: ML models.
- SS/MM models are shaped for AF cases.
- Asymmetric ML models provide better contact with multiple approach options, suitable for AFL and AVNRT cases.
- 8AT models. proximal shaft are relatively softer than MM models.

Distal Tip



4mm

8mm
(AT Tip)

Ablaze Fantasista 5F

- Bi-Directional.
- Slimmer shaft for aortic approach or pediatric cases.
- Long 5mm tip to balance ablation effectiveness of slimmer shaft.
- 24mm SS curve.



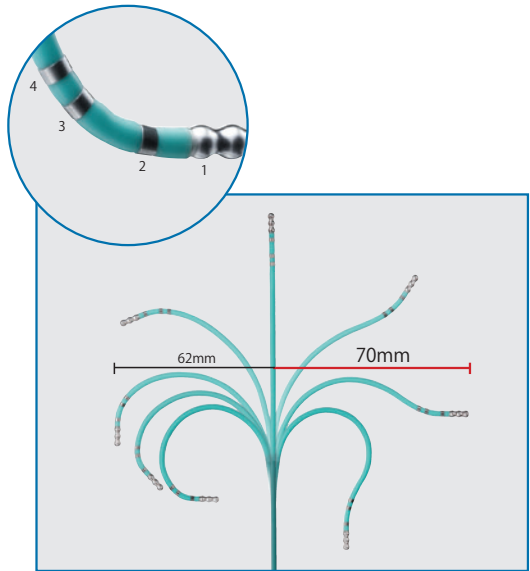
5mm

Model No.	Type	Curve Diameter (mm)	Distal Tip (mm)	Other Electrode(s) Width(mm)	Electrode Spacing(mm)	Usable Length (cm)	Recommended Sheath Size(F)
3221-4SS	SS	25 · 25	4	1.2	2-2-2	110	7
3221-4ML	ML	42 · 34	4	1.2	2-2-2	110	7
3221-4MM	MM	34 · 34	4	1.2	2-2-2	110	7
3221-8SS	SS	25 · 25	8	1.2	2-2-2	110	8
3221-8MM	MM	34 · 34	8	1.2	2-2-2	110	8
3221-8AT	MM	34 · 34	8	1.2	2-2-2	110	8
3221-8ML	ML	42 · 34	8	1.2	2-2-2	110	8
3221-8AFL	Knuckle	50 · 35	8	1.2	2-5-2	110	8
Fantasista 5F							
3115-5SS	SS	24 · 24	5	1	2-2-2	110	5.5

Recommended Model for AFL Cases

Knuckle Curve

- Asymmetric bi-directional curves provides multiple contact methods to the CTI.
- Stiffer shaft for improved CTI contact stability.
- Deflection point us between the 2nd & 3rd electrode.
- Larger electrode spacing and softer shaft between the 2nd & 3rd electrode provides finer tip control.

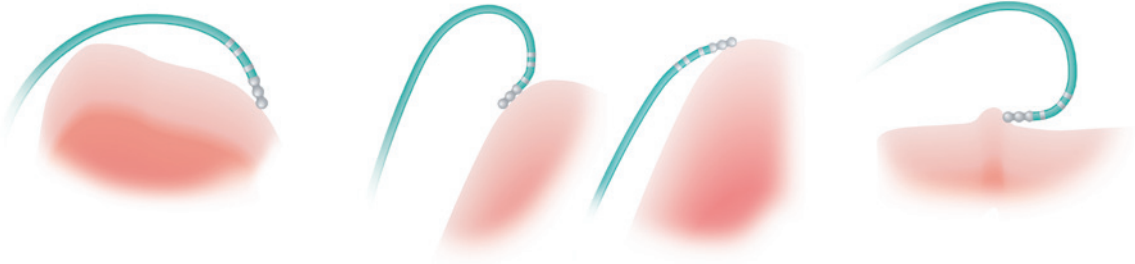


Knuckle Curve (Curve Reach 62mm)

Grasping the Tricuspid Annulus

Holding on to descending regions of the IVC

Anchoring on to protrusions

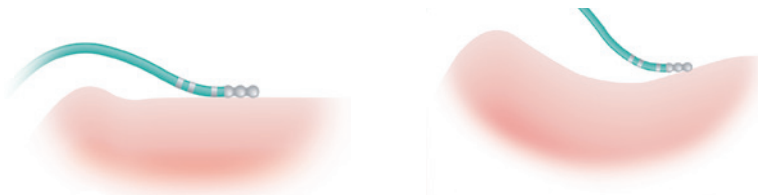


Effective ablation by holding on to the Tricuspid Annulus and descending regions of the IVC.

Long-Reach Curve (Curve Reach 70mm)

Reach wide isthmuses

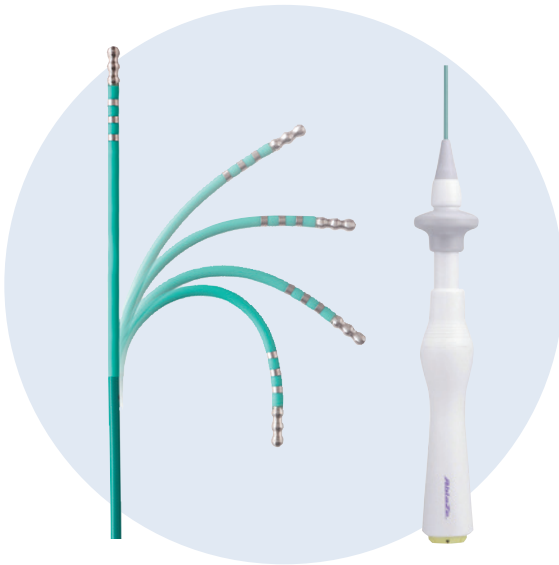
For a variety of isthmus anatomies



Curve reach of 70mm, capable of treating enlarged atriums.

Ablaze

Single-Directional



Features

- Single Direction.
- Complete curve variations for all cases.
- Easy approach, soft and safe shaft.
- Pull lever handle.
- Improved torque performance with multi-lumen shaft.

Distal Tip



4mm

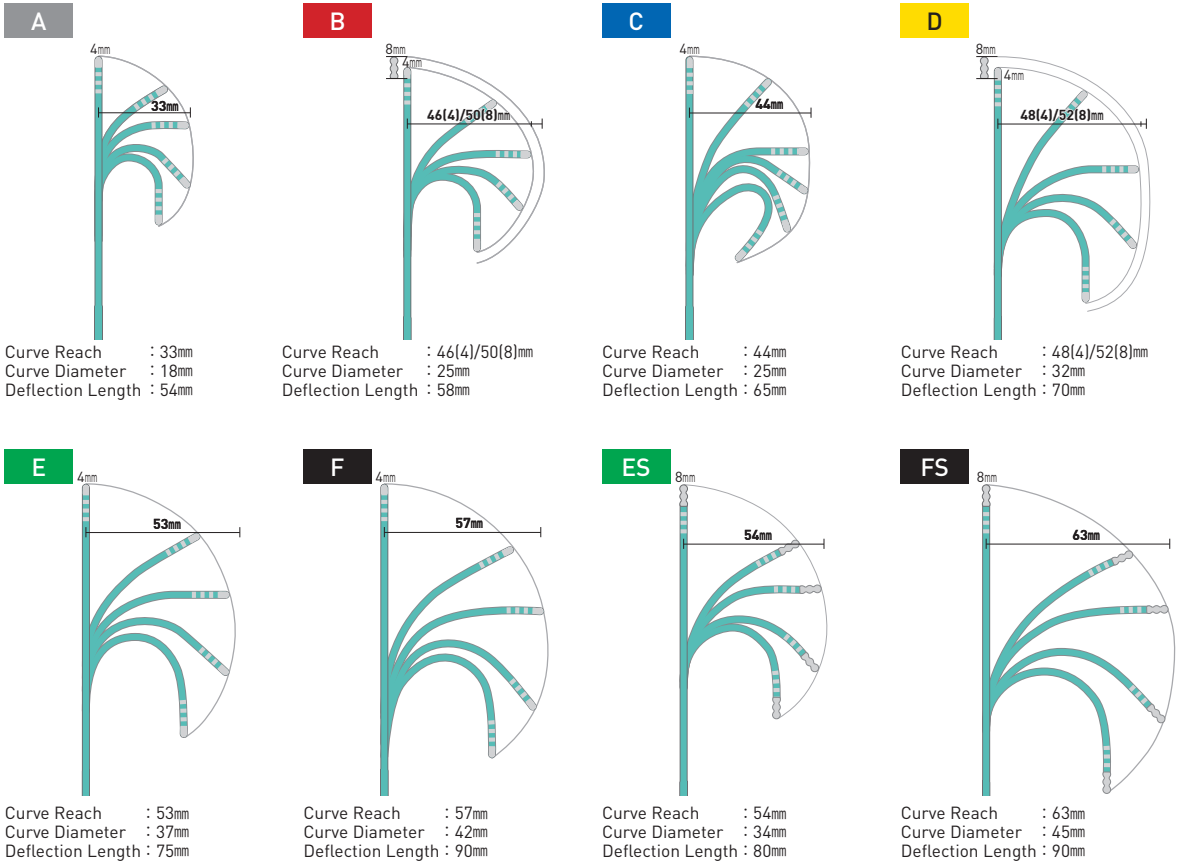
8mm
(AT Tip)

Model No.	Type	Curve Diameter (mm)	Distal Tip (mm)	Other Electrode(s) Width(mm)	Electrode Spacing(mm)	Usable Length (cm)	Recommended Sheath Size(F)
221-4AL	A	18	4	1.2	2-2-2	110	7
221-4BL	B	25	4	1.2	2-2-2	110	7
221-4CL	C	25	4	1.2	2-2-2	110	7
221-4DL	D	32	4	1.2	2-2-2	110	7
221-4ER	E(ES)	37	4	1.2	2-2-2	110	7
221-4FR	F(FS)	42	4	1.2	2-2-2	110	7
221-8B1	B	25	8	1.2	2-2-2	110	8
221-8ES1	E(ES)	34	8	1.2	2-2-2	110	8
221-8FS1	F(FS)	45	8	1.2	2-2-2	110	8

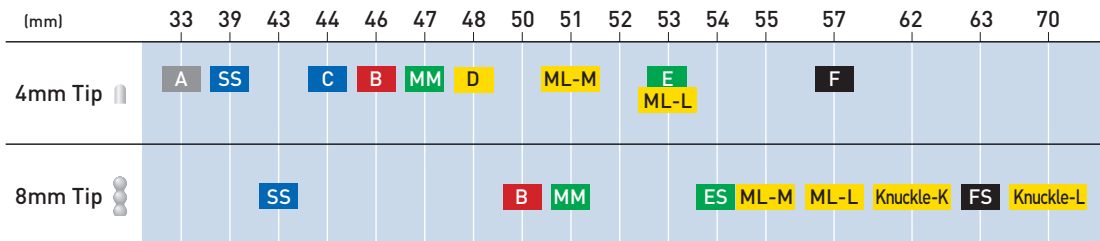
Ablation Catheter Curve Reference

Ablaze series

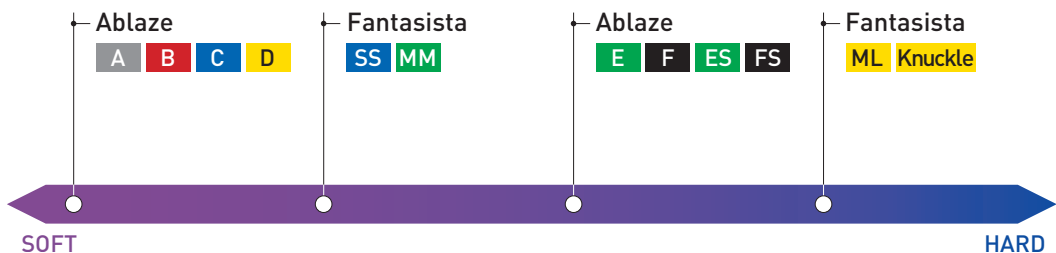
Number in (): Type of Distal Tip Electrode



Curve Reach by Models

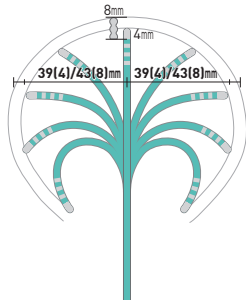


Shaft Durometer by Models



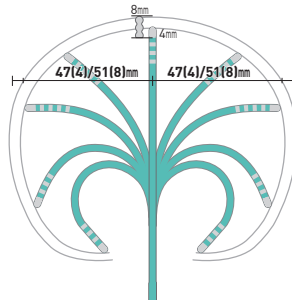
Ablaze Fantasia series Number in []: Type of Distal Tip Electrode

SS



Curve Reach : 39(4)/43(8)mm • 39(4)/43(8)mm
 Curve Diameter : 25mm • 25mm
 Deflection Length : 58mm

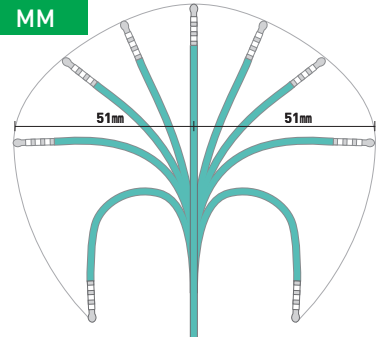
MM/AT



Curve Reach : 47(4)/51(8)mm • 47(4)/51(8)mm
 Curve Diameter : 34mm • 34mm
 Deflection Length : 65mm

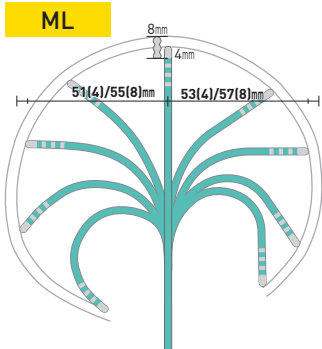
Ablaze Bernoulli

MM



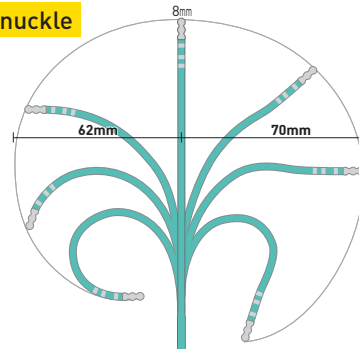
Curve Reach : 51mm • 51mm
 Curve Diameter : 34mm • 34mm
 Deflection Length : 65mm

ML



Curve Reach : 51(4)/55(8)mm • 53(4)/57(8)mm
 Curve Diameter : 42mm • 34mm
 Deflection Length : 75mm

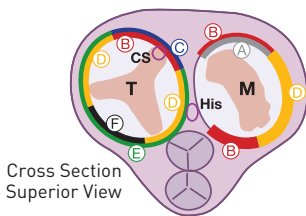
Knuckle



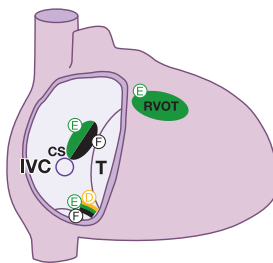
Curve Reach : 62mm • 70mm
 Curve Diameter : 50mm • 35mm
 Deflection Length : 85mm

Recommended Cases by Models

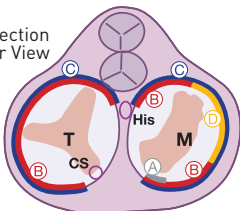
AVRT



AVNRT, AFL, VT (RVOT)



Cross Section Inferior View



Distal Tip Electrode Variations



SHOCK AT α

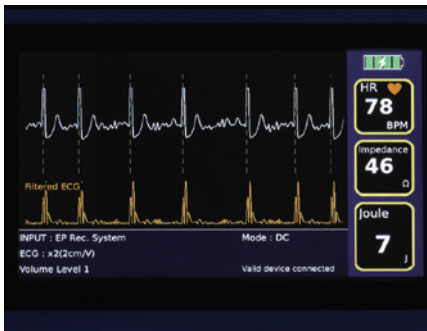
[Generator]

Features

- Output energy range of 1–30 J (Adjusted in steps of 1J).
- Biphasic output for higher cardioversion success rate.
- Less noise interference with DC power supply.



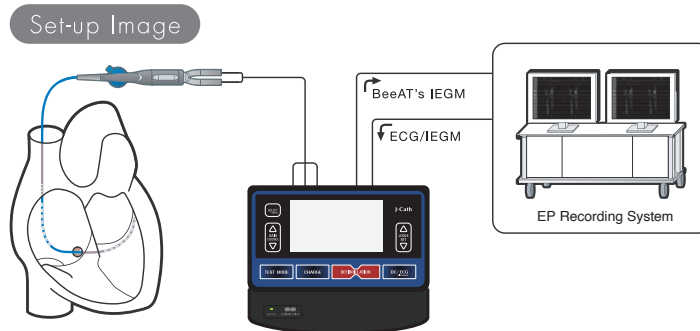
Model No.	ACG30-2
Voltage	AC100V-240V
Size	W300×D255×H117mm
Weight	4.5kg



ECG Mode Screen



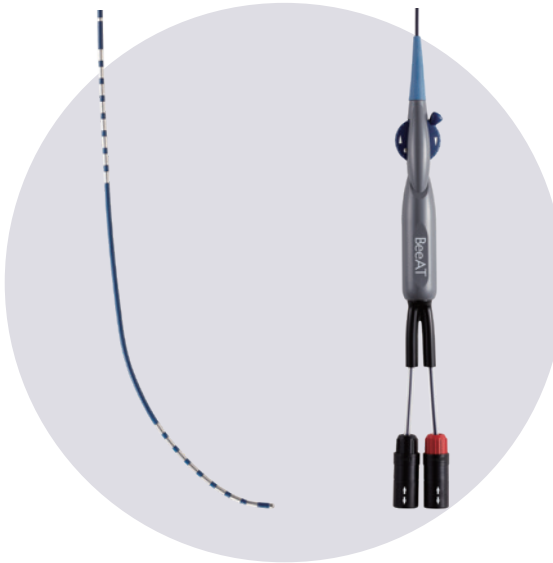
Screen after Cardioversion



BeeAT

[Catheter]

Steerable



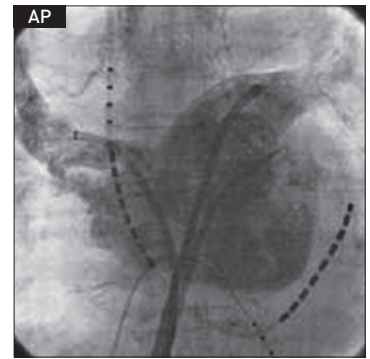
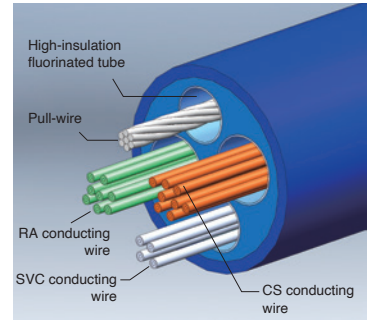
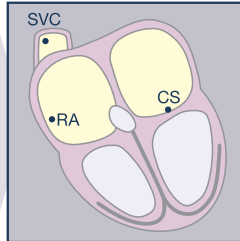
Features

BeeAT

- Use with SHOCK AT a generator to cardiovert atrial arrhythmias during ablation procedures.
- Simultaneous mapping between CS, RA and SVC.
- Distal curve shaped for easy CS cannulation.
- Multi-lumen shaft with excellent insulation.

Long BeeAT

- Long model for brachial approach.



BeeAT	Model No.	Type	Distal Tip (mm)	Other Electrode(s) Width(mm)	Electrode Spacing (mm)	Usable Length (cm)
Duodecapolar/ 6F	S20884-80S	SVC-RA-CS	2	4/1.2	2-2...50-2-2...10-5-5-5	80
	S20884-80M	SVC-RA-CS	2	4/1.2	2-2...70-2-2...10-5-5-5	80
	S20884-80L	SVC-RA-CS	2	4/1.2	2-2...90-2-2...10-5-5-5	80
	S20884ST-M	SVC-RA-CS	2	4/1.2	2-2...70-2-2...10-5-5-5	80
	S20884ST-L	SVC-RA-CS	2	4/1.2	2-2...90-2-2...10-5-5-5	80
	S208282-SAOC	SVC-RA-CSos-CS	2	4/1.2	2-2...20-20-28-2-2...15-10	80
	S208282-SAOCST	SVC-RA-CSos-CS	2	4/1.2	2-2...20-20-28-2-2...15-10	80
	S208282-SAOC2	SVC-RA-CSos-CS	2	4/1.2	2-2...10-10-48-2-2...15-10	80
	S20848-AOC	RA-CSos-CS	2	4/1.2	2-2...5-5...45-2-2...	80
	S20848-AOCL	RA-CSos-CS	2	4/1.2	2-2...20-5...50-2-2...	80
Long BeeAT						
Duodecapolar/ 6F	S20884-100M	SVC-RA-CS	2	4/1.2	2-2...70-2-2...10-5-5-5	102
	S20848-100AOC	RA-CSos-CS	2	4/1.2	2-2...5-5...45-2-2...	102
Lumen BeeAT (Fix Type)						
Duodecapolar/6F	SF20884L-80M	SVC-RA-CS	-	4/1.2	2-2...70-2-2...10-5-5-5	80

BeeAT via IVC approach

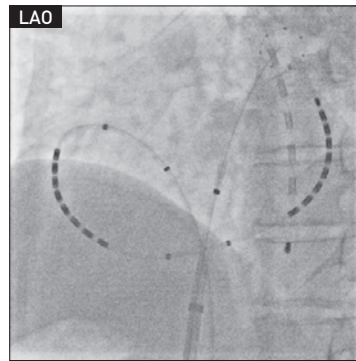
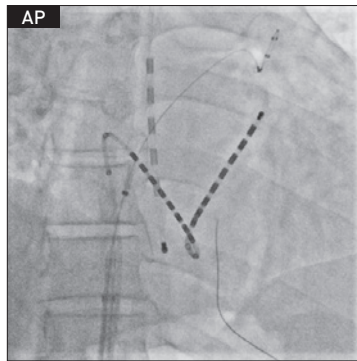
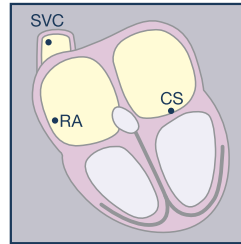
[Catheter]

Steerable



Features

- Use with SHOCK AT a generator to cardiovert atrial arrhythmias during ablation procedures.
- Multi-lumen shaft with excellent insulation.
- Create “a-shaped” curve along the RA wall for mapping and cardioversion purposes.
- Precise control of the catheter tip for easier CS ostium cannulation under IVC approach.



IVC BeeAT	Model No.	Type	Distal Tip (mm)	Other Electrode(s) Width(mm)	Electrode Spacing (mm)	Usable Length (cm)
Duodecapolar/ 6F	S208282B-SAOCM	SVC-RA-CSos-CS	2	4/1.2	2-2...5-5-58-2-2...15-10	102
	S208282B-SAOC3	SVC-RA-CSos-CS	2	4/1.2	2-2...22.5-22.5-22.5-2-2...25-25	102
	S208282PS-SAOC3	SVC-RA-CSos-CS	2	4/1.2	2-2...22.5-22.5-22.5-2-2...25-25	102

EsoMeter Monitor



Features

- Temperature display arranged in accordance with catheter electrodes for easier temperature monitoring of ablation site.
- Monitoring temperature range is between 5-75°C, warning temperature can be set from 36-50°C for upper temperature limit and 5-36°C for lower temperature limit. Compatible with RFCA and cryo ablation.
- Compact design, can be mounted on IV stands.

Model No.	EM-1
Monitoring Temperature Range	5-75°C
Warning Temperature Range (Adjusted in steps of 0.5°C)	Upper Temperature Limit 36-50°C Lower Temperature Limit 5-36°C
Size	W180xD80xH160mm
Weight	1.7kg
Power	AC100V 50/60Hz



EsoMeter RecorderPLUS

Software to graphically display and record esophageal temperature.



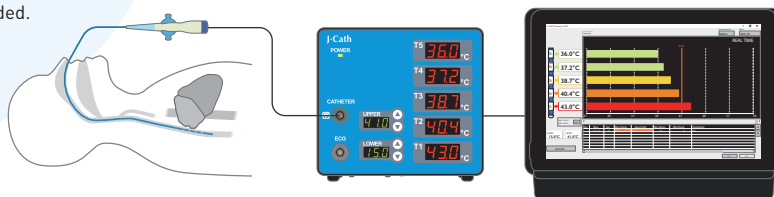
※ Tablet monitor is not included.

Features

- Synchronizes with the EsoMeter Monitor, and displays/ records esophageal temperature.

Model No.	EM514
Recommended System Requirements	
OS	Microsoft Windows 10 Pro Japanese Version
CPU	Intel Atom x5-Z8550 (1.44GHz)
Memory	4GB Or Above
Storage Device	HDD/SSD, ...etc. Free Memory 100MB Or Above
USB	2.0 Port x1
Resolution	1280x800px Or Above
Other Recommendations	Microsoft Excel 2016 Meiryu UI Font

Set-up Image



EsoMeter Catheter

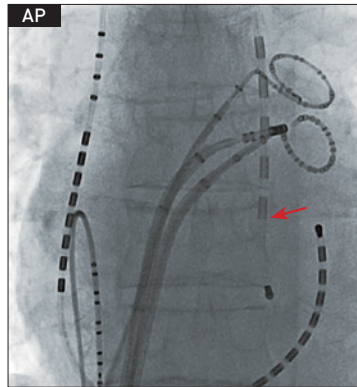
Bi-Directional



Features

- Complete coverage of overlapping regions of the left atrium and esophagus with 5 temperature sensors.
- Smooth insertion with flat electrodes without protrusion.
- Depth marker between 35cm-45cm from the distal tip.

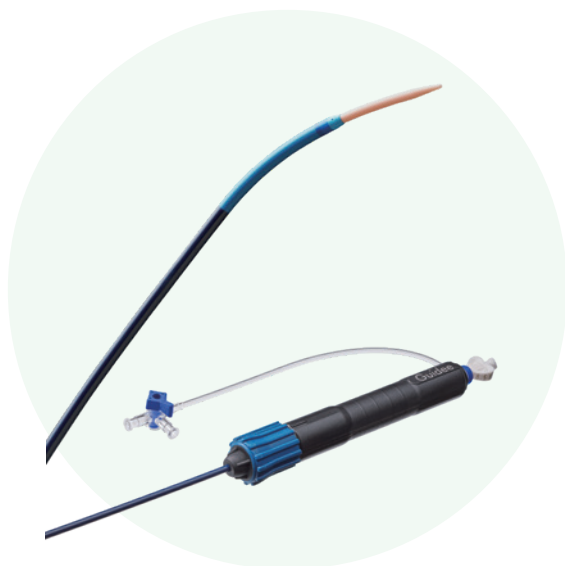
Depth Marker (EC5567I)



EsoMeter	Model No.	Type	Distal Tip (mm)	Other Electrode(s) Width(mm)	Electrode Spacing (mm)	Usable Length (cm)
Pentapolar/7F	EC5567	Esophagus	2	6	5-5-5...	81

Guidee

Steerable



Features

- Distal tapering for smooth transition between sheath and dilator.
- Neutral marker at handle knob. Confirm neutral position without using fluoroscopy.
- Reduced perforation risk with soft distal tip.
- Braided shaft designed for balance of softness and controllability.

Model No.	ST8-64S2
Curve Diameter	Symmetric 17mm
ID	Maximum 8.5F
OD	12F
Usable Length	64cm
	50°Angled Dilator, Usable Length 85.3cm
Accessories	0.032" J-Type Guidewire Full Length180cm
	12F Pre-Dilator Usable Length 15.3cm

Guidee Leftee

Steerable



Features

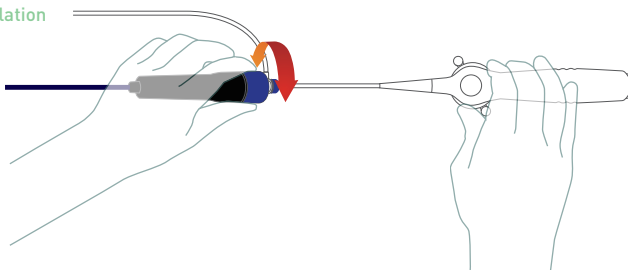
- Control deflection with both hands with proximal handle knob.
- Easy to grip 12cm compact handle for the left hand.
- Neutral marker at handle knob. Confirm neutral position without using fluoroscopy.
- Balanced shaft for softness and device support.
- Single Direction.

Model No.	LST8-70S	LST8-70M
Curve Diameter	17mm	26.5mm
ID	Maximum 8.5F	Maximum 8.5F
OD	12F	12F
Usable Length	70cm	70cm
Accessories	50°Angled Dilator, Usable Length 85.3cm	
	0.032" J-Type Guidewire Full Length 180cm	
	12F Pre-Dilator Usable Length 15.3cm	

Compact Handle
6cm reduction compared with conventional models.



Left-Handed Sheath Manipulation



EPstar Libero SG

Single-Directional

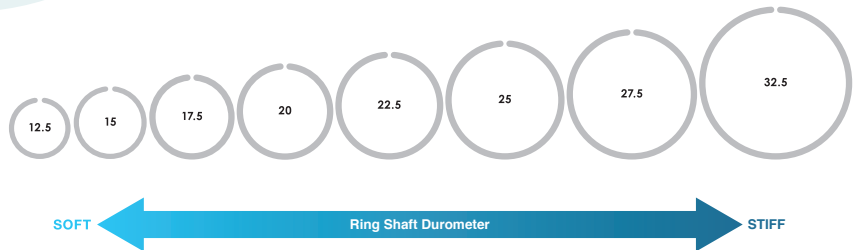
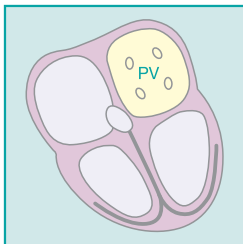
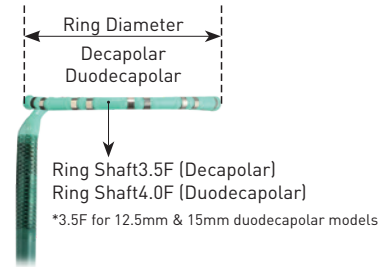


Features

- Decapolar and duodecapolar lineup.
- Curve and shaft balanced designed for easy PV approach.
- Ring mount is designed to protect electrodes and maintain stable contact with PV walls, allowing sharp and fine potentials.
- Smooth approach to PVs with fine distal tip control with support of long sheaths.

F Type

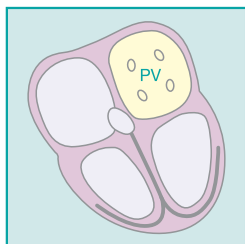
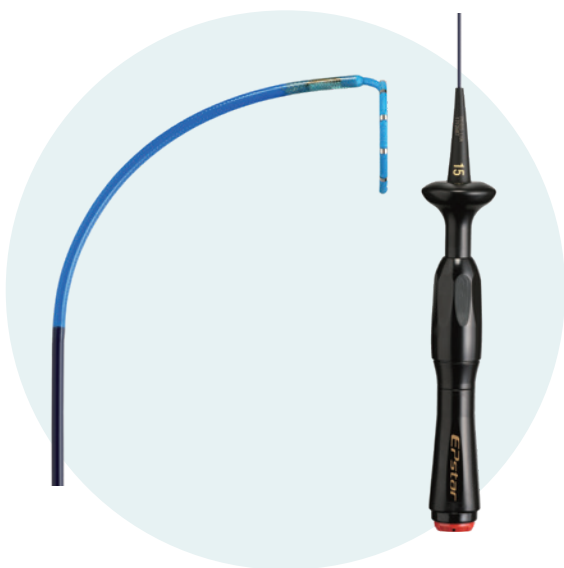
- F type adjusts the shaft balance to improve steerability.
- Fine control of the distal tip with the addition of gear systems inside the handle.



Libero SG	Ring Shaft	Model No.	Ring Diameter	Distal Tip (mm)	Other Electrode(s) Width(mm)	Electrode Spacing (mm)	Usable Length (cm)
Decapolar/ 7F	3.5F	PVI1012.5-110	12.5	1.4	0.65	2.5-3.0-3.0...	110
		PVI1015-110	15	1.4	0.65	3.0-3.5-3.5...	110
		PVI1017.5-110	17.5	1.4	0.65	4.0-4.5-4.5...	110
		PVI1020-110	20	1.4	0.65	4.5-5.5-5.5...	110
		PVI1022.5-110	22.5	1.4	0.65	6.5-6.0-6.0...	110
		PVI1025-110	25	1.4	0.65	6.5-7.0-7.0...	110
Duodecapolar/ 7F	3.5F	PV2012.5-110	12.5	1.4	0.65	2.0-2.0-1.0-2.0...	110
		PV2015-110	15	1.4	0.65	2.0-2.0-1.0-2.0...	110
	4F	PV2017.5-110	17.5	1.4	0.65	2.0-2.5-1.0-2.5...	110
		PV2020-110	20	1.4	0.65	2.0-3.5-1.0-3.5...	110
		PV2022.5-110	22.5	1.4	0.65	2.0-4.5-1.0-4.5...	110
		PV2025-110	25	1.4	0.65	2.0-5.5-1.0-5.5...	110
		PV2027.5-110	27.5	1.4	0.65	2.0-6.0-1.0-6.0...	110
		PV2032.5-110	32.5	1.4	0.65	2.0-8.0-1.0-8.0...	110
Libero SG / F Type							
Decapolar/ 7F	3.5F	PVI1015-110F	15	1.4	0.65	3.0-3.5-3.5...	110
		PVI1020-110F	20	1.4	0.65	4.5-5.5-5.5...	110

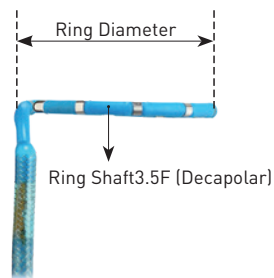
EPstar Libero α

Single-Directional



Features

- Decapolar lineup with slim 5F shaft.
- Curve and shaft balanced designed for easy PV approach.
- Ring mount is designed to protect electrodes and maintain stable contact with PV walls, allowing sharp and fine potentials.
- Smooth approach to PVs with fine distal tip control.



Push Lever Handle for Deflection

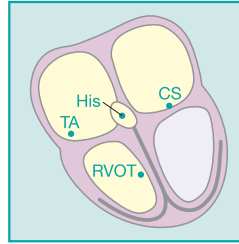
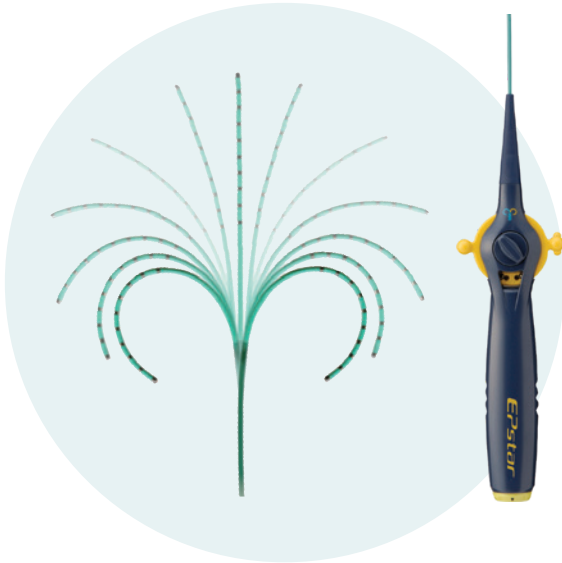
Libero α	Ring Shaft	Model No.	Ring Diameter	Distal Tip (mm)	Other Electrode(s) Width(mm)	Electrode Spacing (mm)	Usable Length (cm)
Decapolar/ 5F	3.5F	PV1015-110A	15	1.4	0.65	3.0-3.5-3.5...	110
		PV1017.5-110A	17.5	1.4	0.65	4.0-4.5-4.5...	110
		PV1020-110A	20	1.4	0.65	4.5-5.0-5.0...	110

EPstar Snake

Bi-Directional

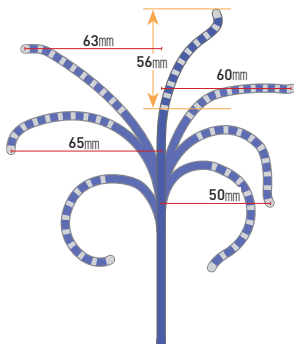
Features

- Capable of mapping winding blood vessels, left anterior Kent bundles and regions around the aortic valve by approaching distal CS with bi-directional curves.
- Bi-directional catheters can utilize both curves to ensure consistent stable contact at areas around the His bundle and RA lateral wall.



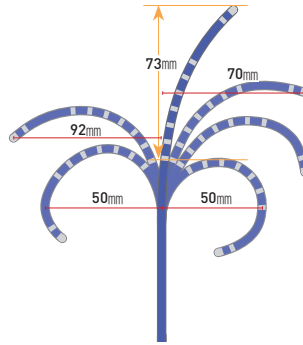
Decapolar/5F

Asymmetric
(5-5-5)



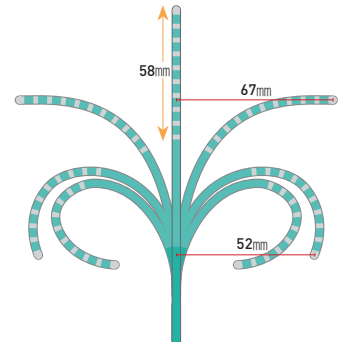
Decapolar/5F

Asymmetric
(5-20-5)



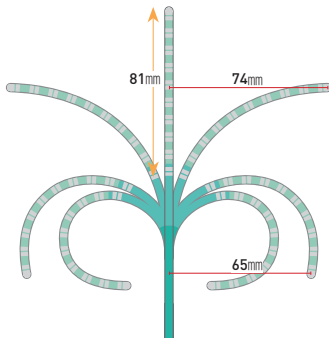
Decapolar/6F

(5-5-5)



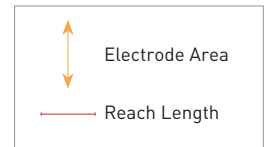
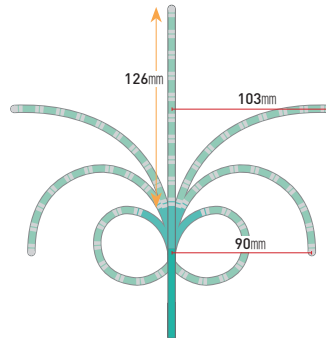
Duodecapolar/6F

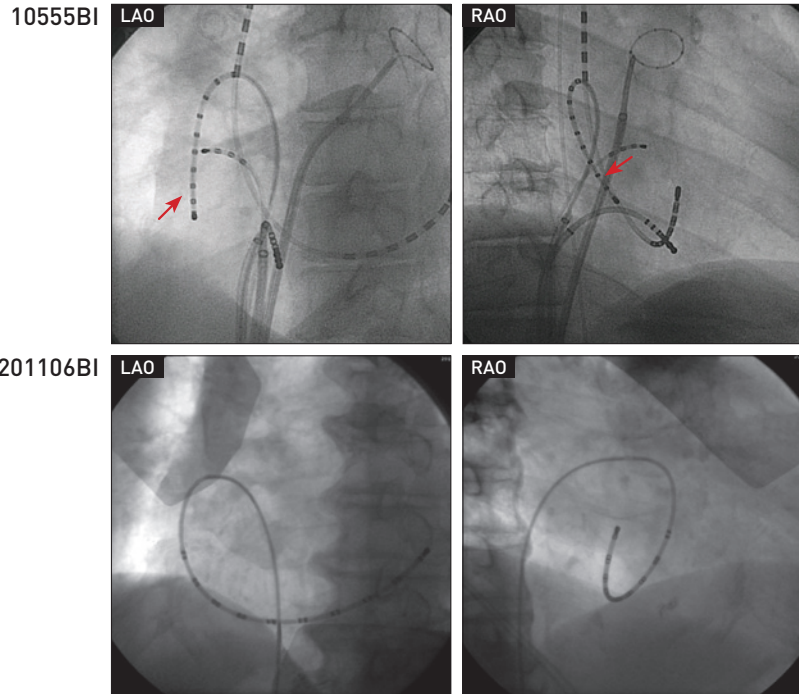
(1-5-1)



Duodecapolar/6F

(1-10-1)





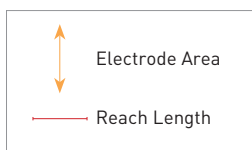
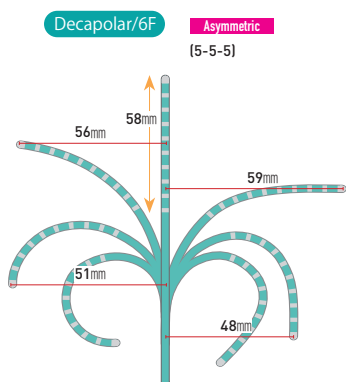
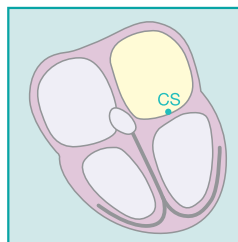
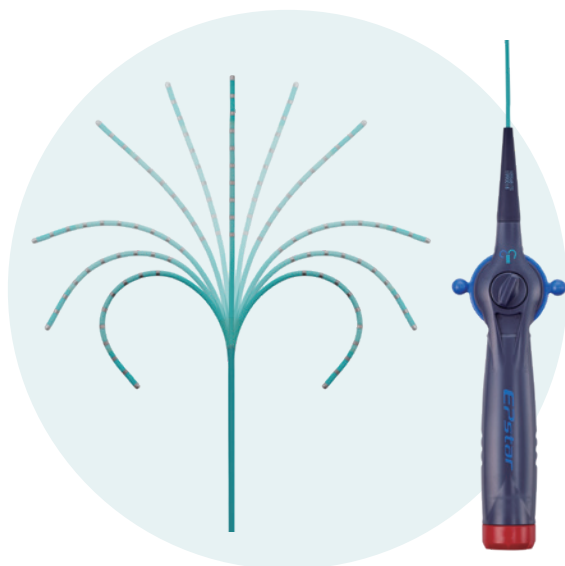
Snake	Model No.	Curve Diameter	Distal Tip (mm)	Other Electrode(s) Width(mm)	Electrode Spacing (mm)	Usable Length (cm)
Quadripolar/7F	4257ML	42 · 34	4	1.2	2-5-2	110
Hexapolar/6F	6556BI-100R	47 · 47	2	1.2	5-5-5-5-273	105
	6226BI-100R	47 · 47	2	1.2	2-2-2-2-285	105
Decapolar/5F	10555BI	55 · 55	2	1	5-5-5...	105
	10555BIAL	68 · 50	2	1	5-5-5...	105
	10555BIHV-R Asymmetric	50 · 50	2	2	5-20-5-5-5...97	105
Decapolar/6F	10556BI-100 Asymmetric	52 · 52	2	1.2	5-5-5...	105
	10226BI-100	50 · 50	2	1.2	2-2-2...	105
	102156BIK1	88 · 88	2	1.2	2-15-2...	105
	10556BIAS Asymmetric	50 · 60	2	1.2	5-5-5...	105
Hendecapolar/6F	11556BI-100R	55 · 55	2	1.2	5-5-5...285	105
Duodecapolar/6F	20156BI	65 · 65	2	1.2	2-5-1-5-1...	105
	201106BI	90 · 90	2	1.2	2-10-1-10-1...	105
	20226BI	57 · 57	2	1.2 (electrode #10: 2 mm)	2-2-2...	105

EPstar Snake TS

Bi-Directional

Features

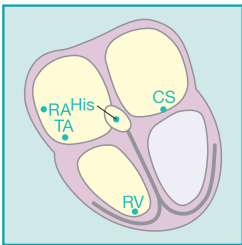
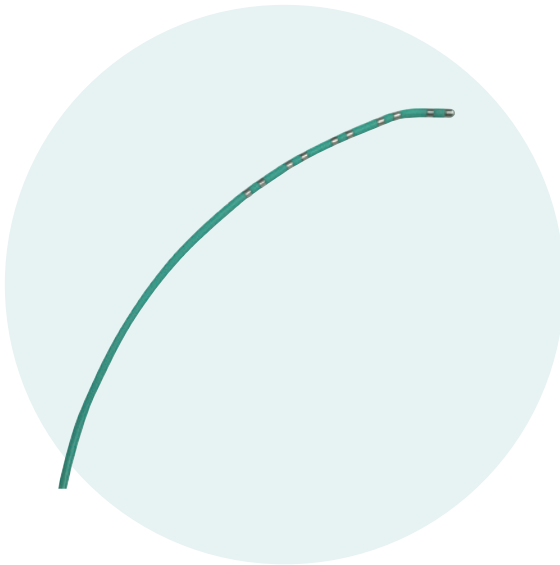
- The configuration of the double support wires provides great trackability and enables maneuvering in windy vasculature.
- The high-quality bidirectional shaft and tip shape provides excellent pushability.



Snake TS	Model No.	Curve Diameter	Distal Tip (mm)	Other Electrode(s) Width(mm)	Electrode Spacing (mm)	Usable Length (cm)	
Decapolar/5F	11555BITS-R	Asymmetric	51 • 48	2	1.2	5-5-5...	105
	10556BITS	Asymmetric	51 • 48	2	1.2	5-5-5...	105
Decapolar/6F	10556BITS-3D	Asymmetric	51 • 48	2	1.2	5-5-5...	105
	11556BITS-3DR	Asymmetric	51 • 48	2	1.2	5-5-5...	105
Duodecapolar/6F	20226BITS	Asymmetric	51 • 48	2	1.2 (electrode #10: 2 mm)	2-2-2...	105
	202586BITS	Asymmetric	120	2	1.2	2-5-2...65-8-8-8...	105

EPstar Map

Steerable



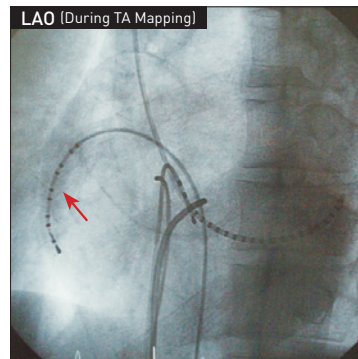
Features

10225M-100

- Capable of multi-polar mapping of His-RVOT, ...etc.
- Capable of RA lateral wall mapping in smaller hearts.

10554L/10255M-L100/10255M-L100R

- Capable of RA lateral wall mapping with large curve.



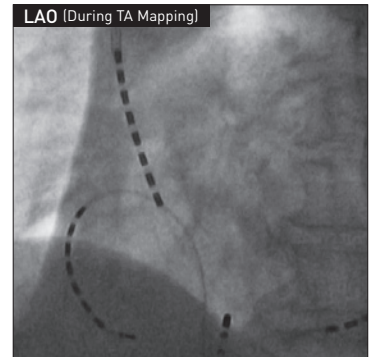
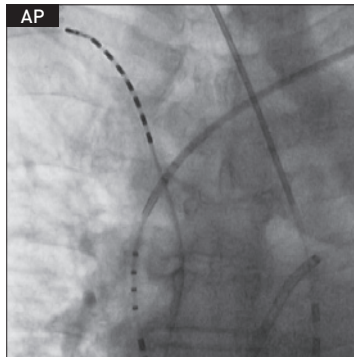
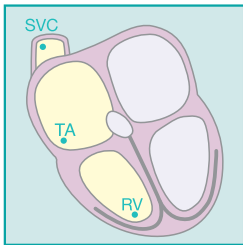
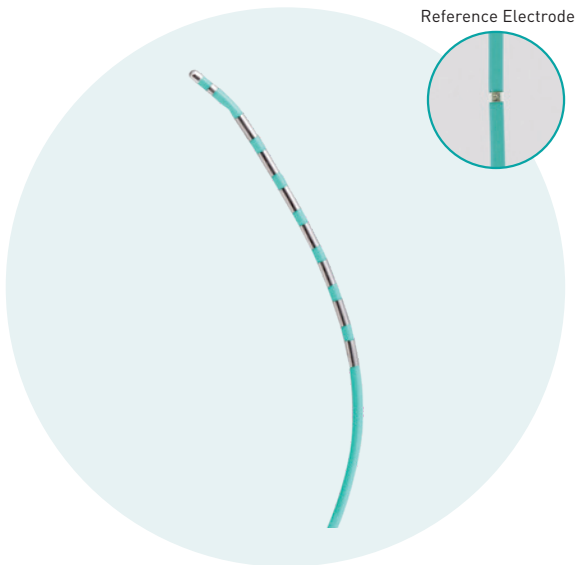
Map	Model No.	Distal Tip (mm)	Other Electrode(s) Width(mm)	Electrode Spacing (mm)	Usable Length (cm)
Decapolar/4F	10554L	2	1	5-5-5...	100
	10225M-100	2	1	2-2-2...	105
Decapolar/5F	10255M-L100	2	1	2-5-2...	105
	10255M-L100R	2	1	2-5-2...162	105

EPstar Wide Band Multi

Steerable

Features

- Wide electrodes for better chance of capture during pacing.
- Model for mapping multiple sites.
- Reference electrode for unipolar mapping (Situating at 20cm from the distal tip).



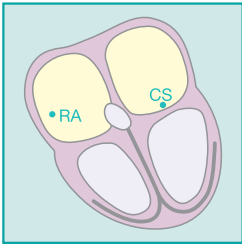
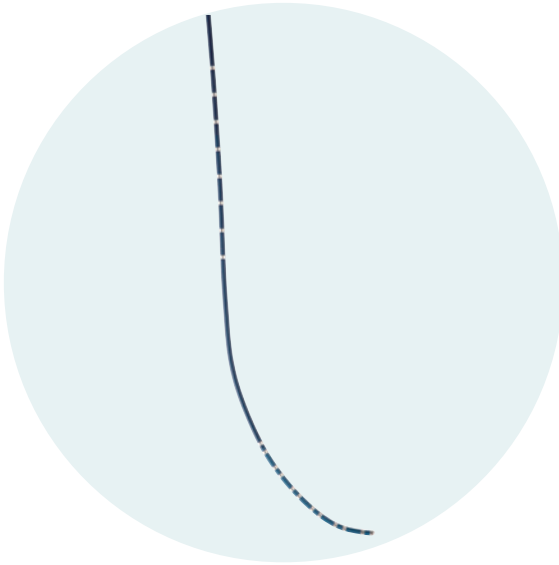
Wide Band Multi	Model No.	Distal Tip (mm)	Other Electrode(s) Width(mm)	Electrode Spacing (mm)	Usable Length (cm)
Decapolar/5F	102525MW-R	2	4 (electrode #2: 1 mm)	2-5-2-2-2...155	105

EPstar RA-CS

Steerable

Features

- Distal tip curve shaped for easy approach to the CS ostium.
- Capable of simultaneous mapping CS and RA areas.
- Great torque performance with short shaft.
- SVC approach lineup.



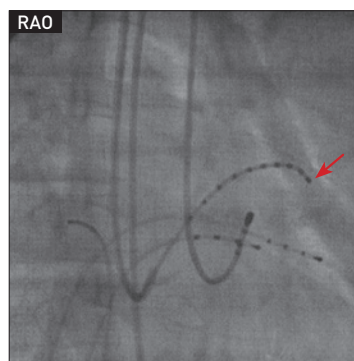
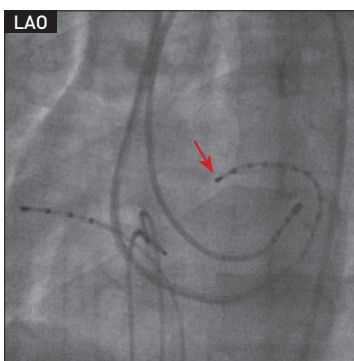
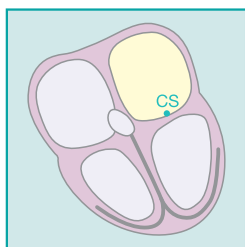
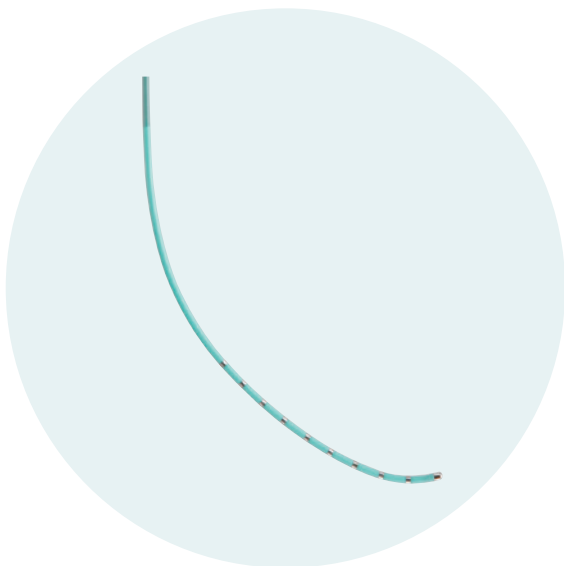
RA-CS	Model No.	Distal Tip (mm)	Other Electrode(s) Width(mm)	Electrode Spacing (mm)	Usable Length (cm)
Duodecapolar/6F	202586RACS	2	1.2	2-5-2...65-8-8...	80
	20336RACS-80	2	1.2	3-3...50-3-3...	80

EPstar EPstar CS High

Steerable

Features

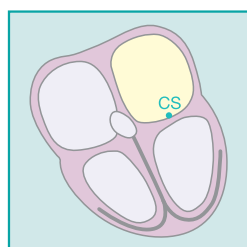
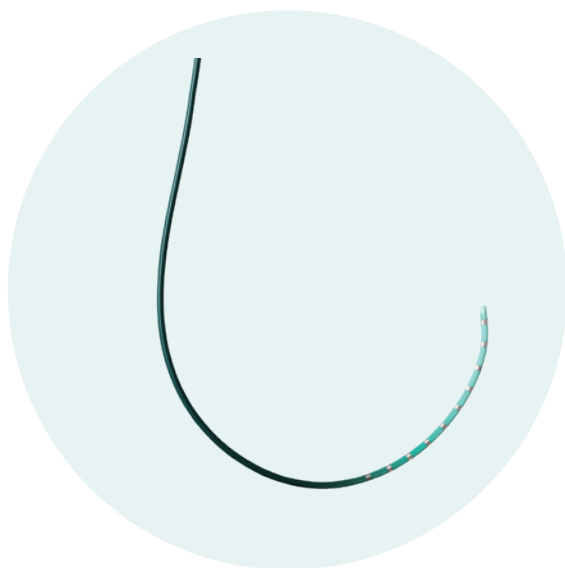
- Distal tip curve shaped for easy approach to the CS ostium.
- Shaft balanced designed for smooth insertion inside the CS.
- Great torque performance with short shaft.
- SVC approach lineup (And brachial approach for 85cm lineup).



CS-High	Model No.	Distal Tip (mm)	Other Electrode(s) Width(mm)	Electrode Spacing (mm)	Usable Length (cm)
Decapolar/5F	10285CS1-65	2	1	2-8-2...	65
	10555CS1-65	2	1	5-5-5...	65
	10255CS1S-65	2	1	2-5-2...	65
	10555CS-80	2	1	5-5-5...	85
Decapolar/6F	10256CS-80	2	1	2-5-2...	80
Duodecapolar/6F	20226CS-80	2	1.2	2-2-2...	80

EPstar Fix CS Lumen

Fixed

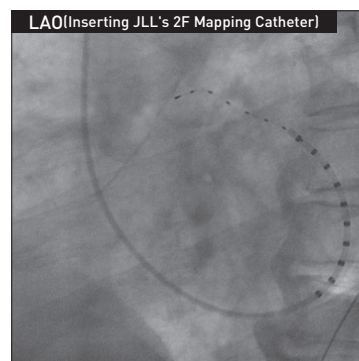
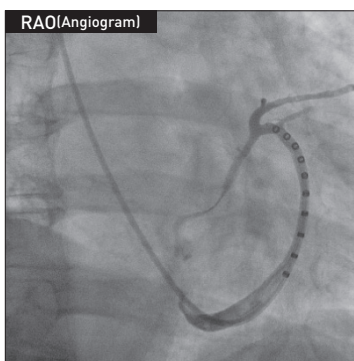


Features

- Shaft balance designed for great torque performance and softness throughout the catheter.
- Capable of inserting 0.035" guidewires and performing CS angiograms.
- Capable of mapping distal CS by inserting 2F mapping catheter.
- SVC approach lineup.

F11556CSL-95HT

- Recommended guidewires and catheters: Maximum 0.035" (2.67F)
- Compatible with EPstar Fix AIV



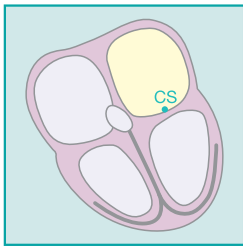
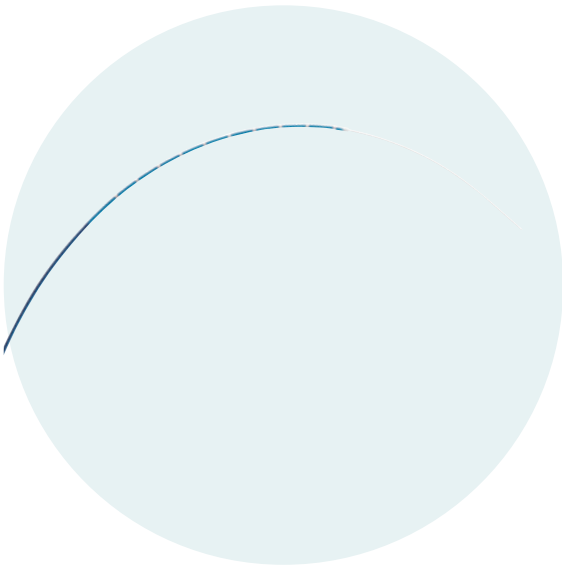
CS with inner lumen	Model No.	Distal Tip (mm)	Other Electrode(s) Width(mm)	Electrode Spacing (mm)	Usable Length (cm)
Decapolar/6F	F10556CSL-65HT	-	1.2	5-5-5...	65
	F10286CSL-65HT	-	1.2	2-8-2...	65
Hendecapolar/6F	F11556CSL-95HT	-	1.2	5-5-5...	95

EPstar Fix AIV

Fixed

Features

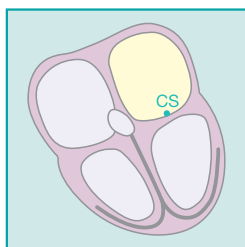
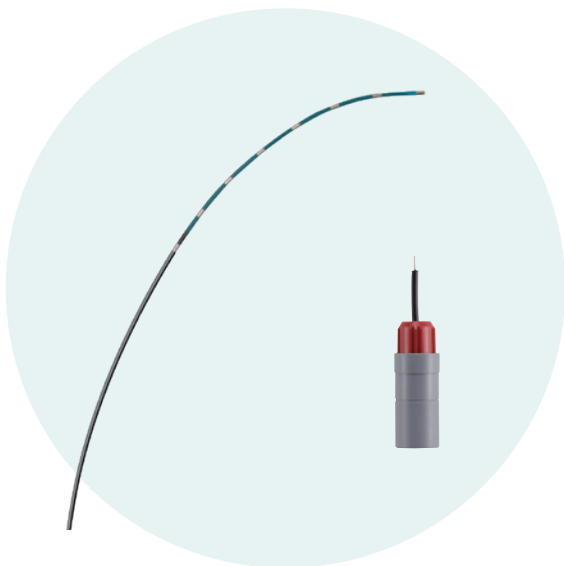
- Compatible with a 0.014" guidewire
- Capable of mapping and pacing safely in the small CS branches other catheters cannot access.



AIV	Model No.	Distal Tip (mm)	Other Electrode(s) Width(mm)	Electrode Spacing (mm)	Usable Length (cm)
Decapolar/ 2.67F	F105527AVL	-	0.65	5-5-5...	130

EPstar Fix 2F

Fixed



Features

- Capable of approaching complexed CS with great torque performance and soft distal tip.
- Capable of low voltage pacing with distal tip electrode.
- Recommended use with 5F guiding catheters for low invasive treatment and smooth approach.
- Capable of inserting into compatible catheters with inner lumens.

【Recommended Guiding Catheters】

For IVC approach: AL1, AL1.5, AL2

※ Y-connectors are required instead of hemostasis valves when using guiding catheters.

2F	Model No.	Distal Tip (mm)	Other Electrode(s) Width(mm)	Electrode Spacing (mm)	Usable Length (cm)
Octopolar/2F	F8552	1.5	1.3	5-5-5...	130

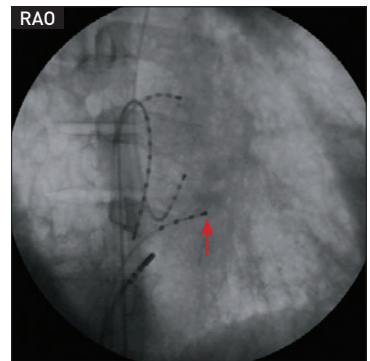
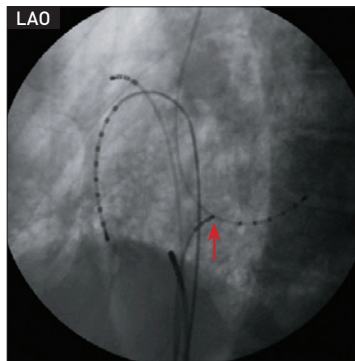
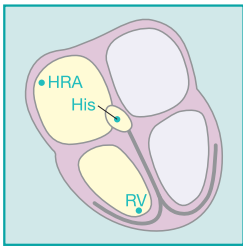
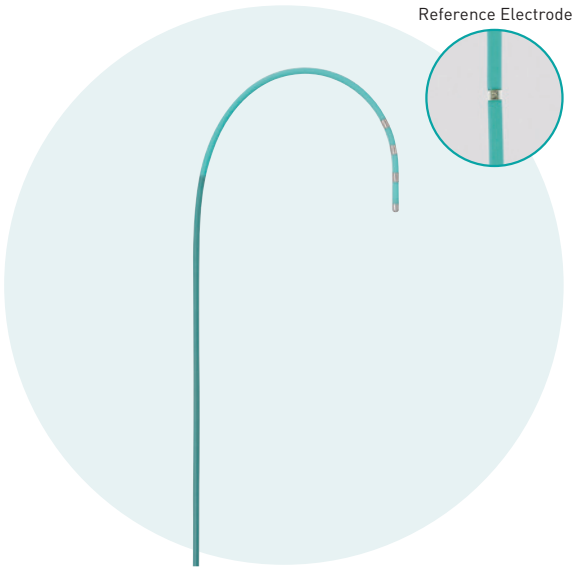
EPstar Multi

Steerable

Features

- Multiple site mapping lineup.
- Supple shaft designed for stable contact.
- Reference electrode for unipolar mapping (Situating at 20cm from the distal tip).

5555M-120R, 5555M-L100R



Multi	Model No.	Distal Tip (mm)	Other Electrode(s) Width(mm)	Electrode Spacing (mm)	Usable Length (cm)
Quadripolar/4F	4554M	2	2	5-5-5	98
	4554L	2	2	5-5-5	100
	4554XL	2	2	5-5-5	101
Pentapolar/5F	5555M-120R	2	2	5-5-5-177	120
	5555M-L100R	2	2	5-5-5-177	105

EPstar His

Steerable

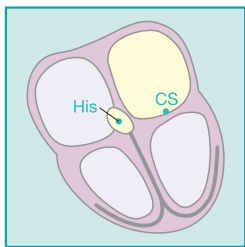
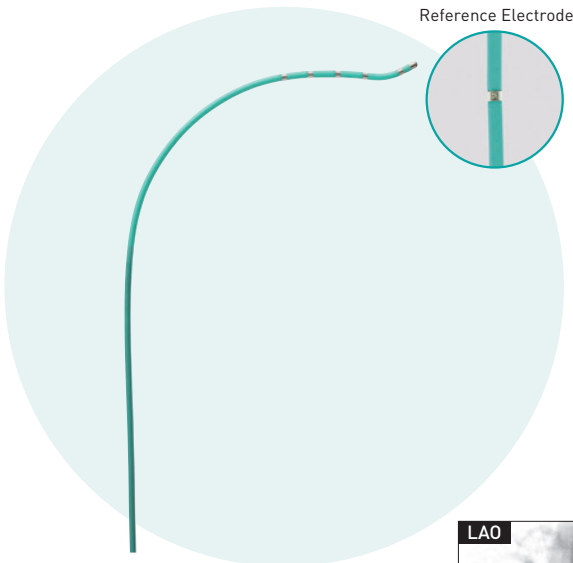
Features

- Stable contact around the His bundle with upward shaping of the distal tip.
- His bundle potentials are easily mapped with wide 2mm electrodes (5555HIS-120R).
- Capable of mapping CS via IVC approach.
- Reference electrode for unipolar mapping (Situating at 20cm from the distal tip).

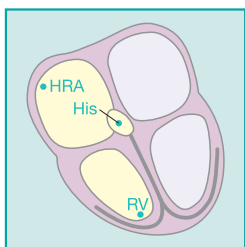
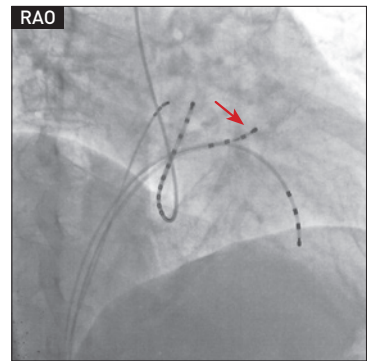
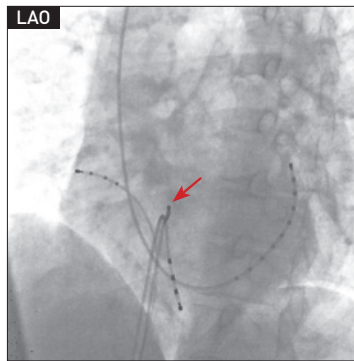
72755PHS-100R/72755PH-100R

- Capable of mapping bundle branches, the His bundle, HRA or RV areas.
- Capable of para-Hisian pacing.

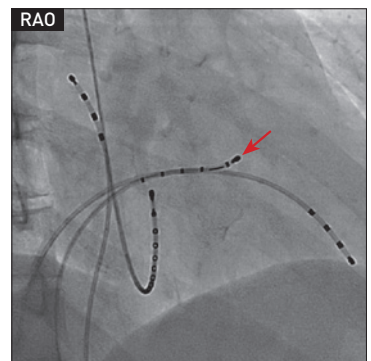
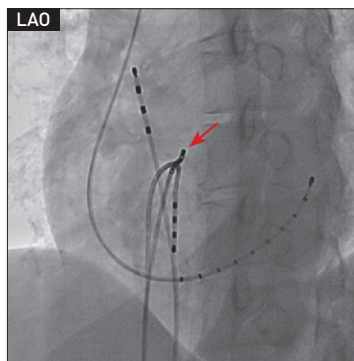
5555HIS-120R



5555HIS-120R
10335HIS-100R



5225HIS-S120
72755PHS-100R
72755PH-100R



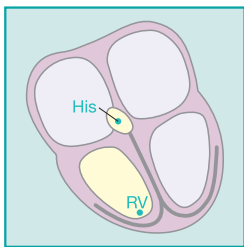
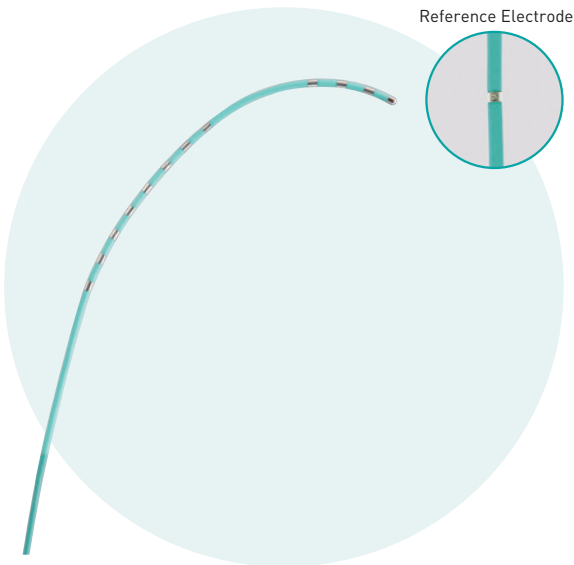
His	Model No.	Distal Tip (mm)	Other Electrode(s) Width(mm)	Electrode Spacing (mm)	Usable Length (cm)
Pentapolar/5F	5555HIS-120R	2	2	5-5-5-177	120
	5225HIS-S120	2	1	5-2-2-2	120
Septapolar/5F	72755PHS-100R	2	1	2-7-5-5-5-169	103
	72755PH-100R	2	1	2-7-5-5-5-169	105
Decapolar/5F	10335HIS-100R	2	1	3-3-3...166	105

EPstar His-RV

Steerable

Features

- Capable of simultaneously mapping His bundle and RV areas.
- Quadrapolar for RV, octapolar for His bundle and 1 reference electrode, 13 electrodes in total.
- Steerable lineup for easier positioning.



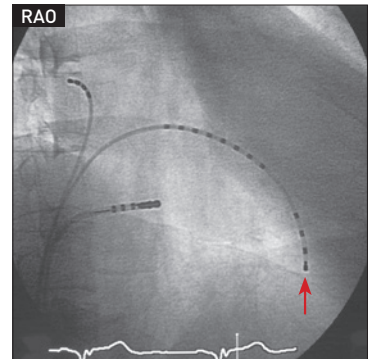
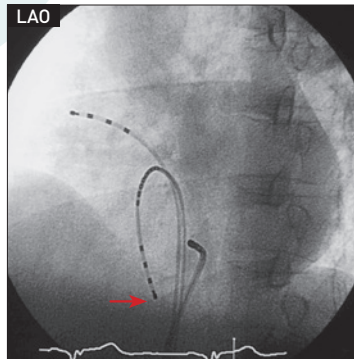
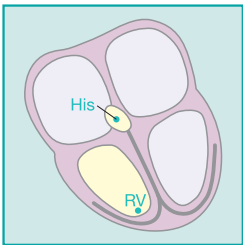
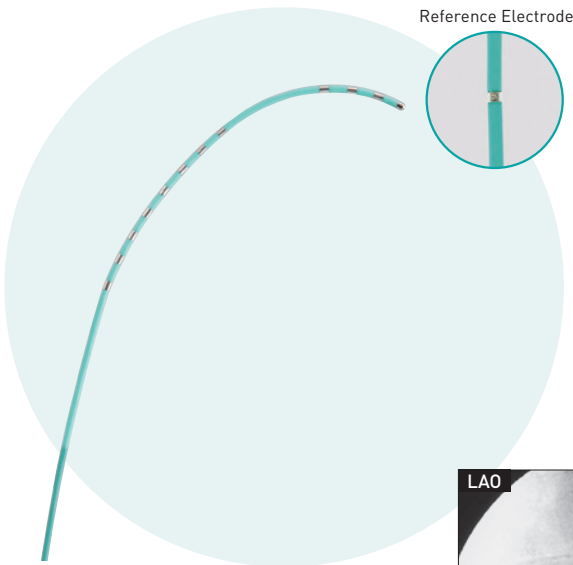
His-RV	Model No.	Distal Tip (mm)	Other Electrode(s) Width(mm)	Electrode Spacing (mm)	Usable Length (cm)
Decapolar/5F	10245M-L100R	2	2	2-36-4-4-4...	105
Tridecapolar (13)/5F	13445HV-R	2	2	4-4-4-23-4...113	105

EPstar Fix His-RV (NOGAMI CURVE)

Fixed

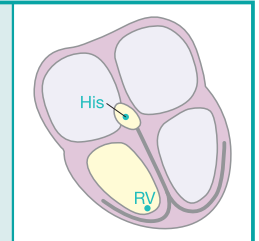
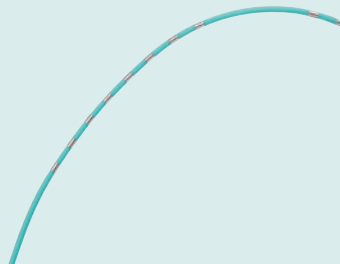
Features

- Capable of simultaneously mapping His bundle and RV areas.
- Quadrapolar for RV, octapolar for His bundle and 1 reference electrode, 13 electrodes in total.
- Clear and stable mapping of His bundle potentials where electrodes stays horizontal regardless of the size of the heart or distal tip position (apex or ventricular septum).



EPstar Fix His-RV

- Capable of simultaneously mapping His bundle and RV areas.
- Capable of mapping His-RVOT as well with shorter 23mm spacing between His bundle and RV electrodes.
- Suitable for pediatric cases with slimmer shaft of 4F.



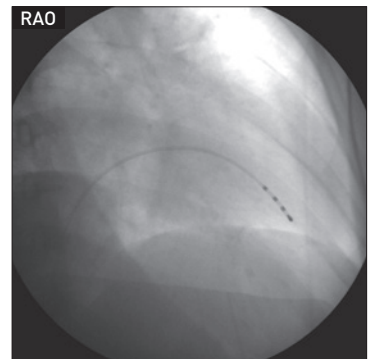
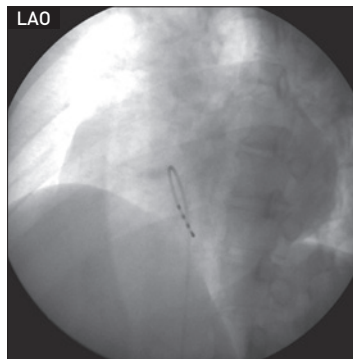
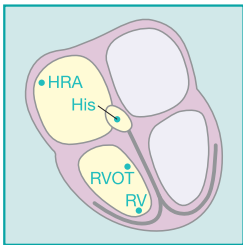
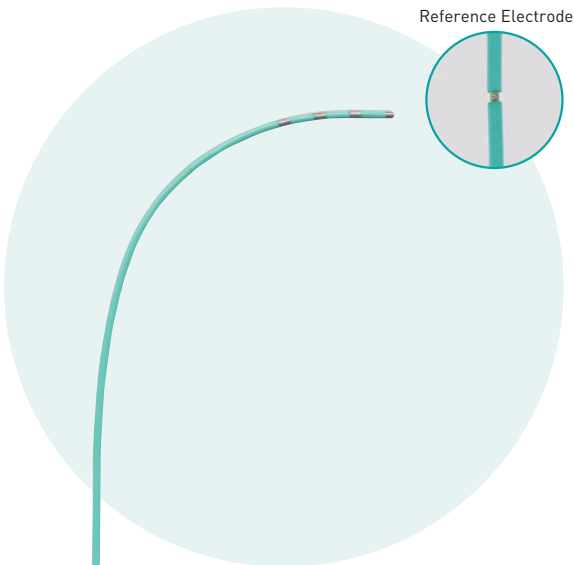
His-RV (NOGAMI CURVE)	Model No.	Distal Tip (mm)	Other Electrode(s) Width(mm)	Electrode Spacing (mm)	Usable Length (cm)
Tridecapolar (13)/5F	F13445HV-120R	2	2	4-4-4-23-4...113	120
His-RV					
Decapolar/4F	F10444HV-120	2	2	4-23-4-4-4...	120

EPstar Fix RV

Fixed

Features

- Distal tip curve shaped for smooth approach to RV.
- Shaft balance designed for stable contact.
- Reference electrode for unipolar mapping (Situating at 20cm from the distal tip).



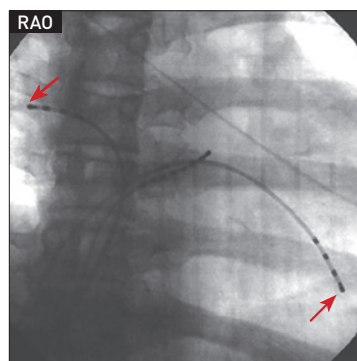
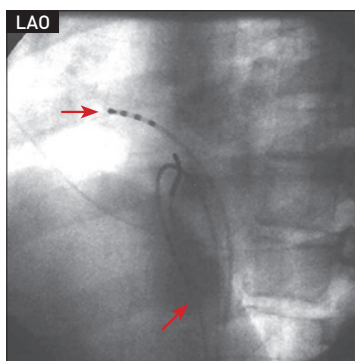
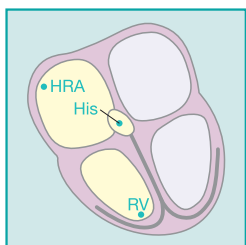
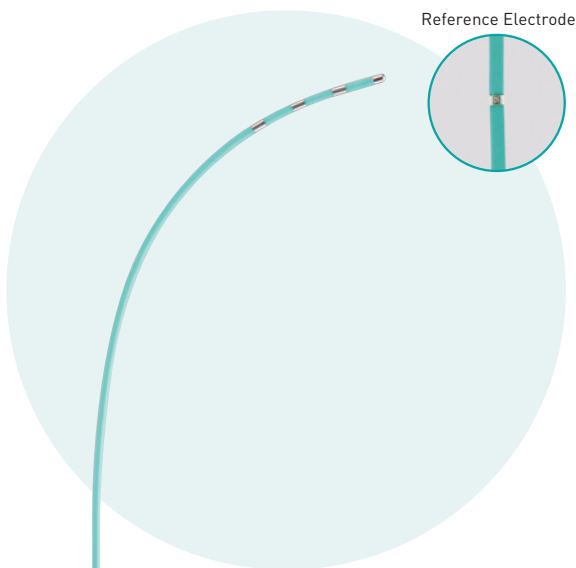
RV	Model No.	Distal Tip (mm)	Other Electrode(s) Width(mm)	Electrode Spacing (mm)	Usable Length (cm)
Pentapolar/5F	F5555RV-120R	2	2	5-5-5-177	120
	F5555K-120R	2	2	5-5-5-177	120

EPstar Fix Josephson

Fixed

Features

- Capable of mapping HRA, His bundle and RA areas.
- Shaft balance designed for stable contact.
- Reference electrode for unipolar mapping (Situating at 20cm from the distal tip).



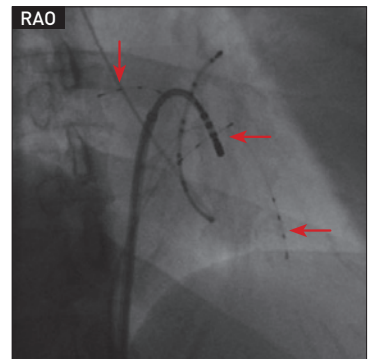
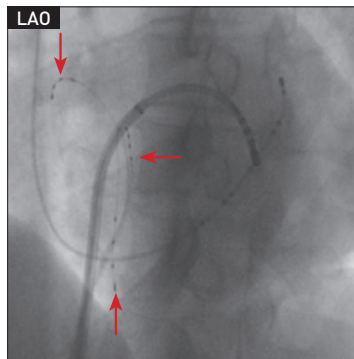
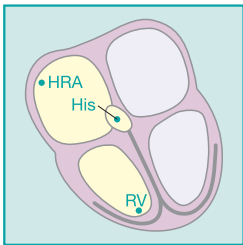
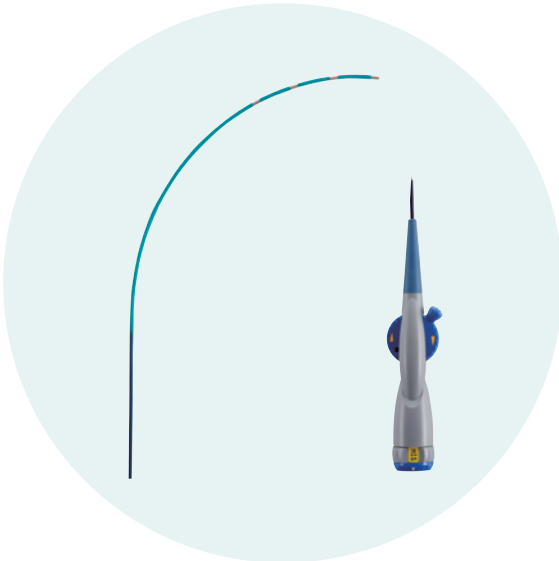
Josephson	Model No.	Distal Tip (mm)	Other Electrode(s) Width(mm)	Electrode Spacing (mm)	Usable Length (cm)
Pentapolar/4F	F5554J-120R	2	2	5-5-5-177	120
Pentapolar/5F	F5555J-120R	2	2	5-5-5-177	120
Hexapolar/4F	F6554J-120R	2	2	5-5-5-5-170	120

EPstar 2F Multi

Steerable

Features

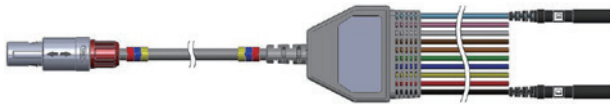
- Slim 2F OD multiple site mapping lineup.
- Slim shaft while maintaining stability.
- Suitable for pediatric cases.



2F Multi	Model No.	Distal Tip (mm)	Other Electrode(s) Width(mm)	Electrode Spacing (mm)	Usable Length (cm)
Quadripolar/2F	4552M	1.5	1.3	5-5-5	90
	4552L	1.5	1.3	5-5-5	90

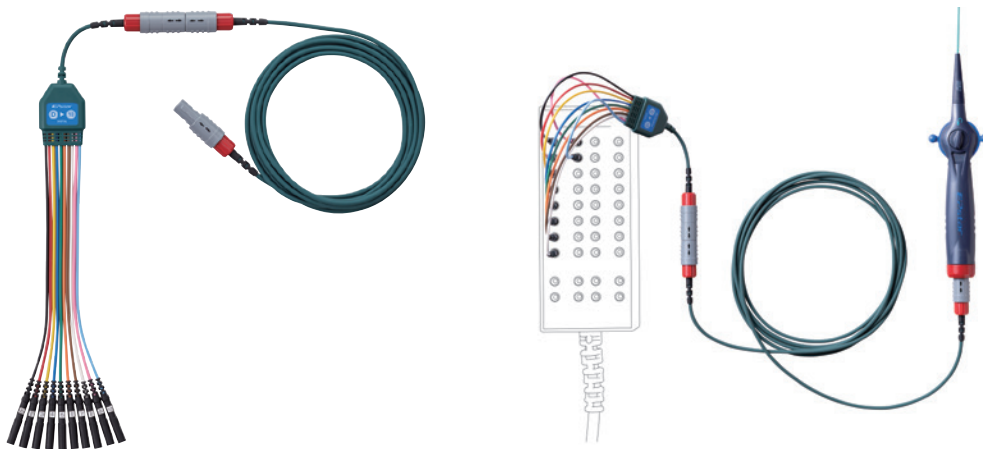
EPstar Electrode Cable

EPstar ELECTRODE CABLE			
Model No.	Pins	Usable Length (cm)	Compatible Catheter
3005-20	5	200	Quadripolar, Pentapolar
3010-20S	10	200	Hexapolar, Septapolar, Octopolar, Decapolar
3010-25S	10	250	Hexapolar, Septapolar, Octopolar, Decapolar
3014-20	14	200	Hendecapolar, Tridecapolar(13)
3020-20S	20	200	Duodecapolar
3020-25S	20	250	Duodecapolar

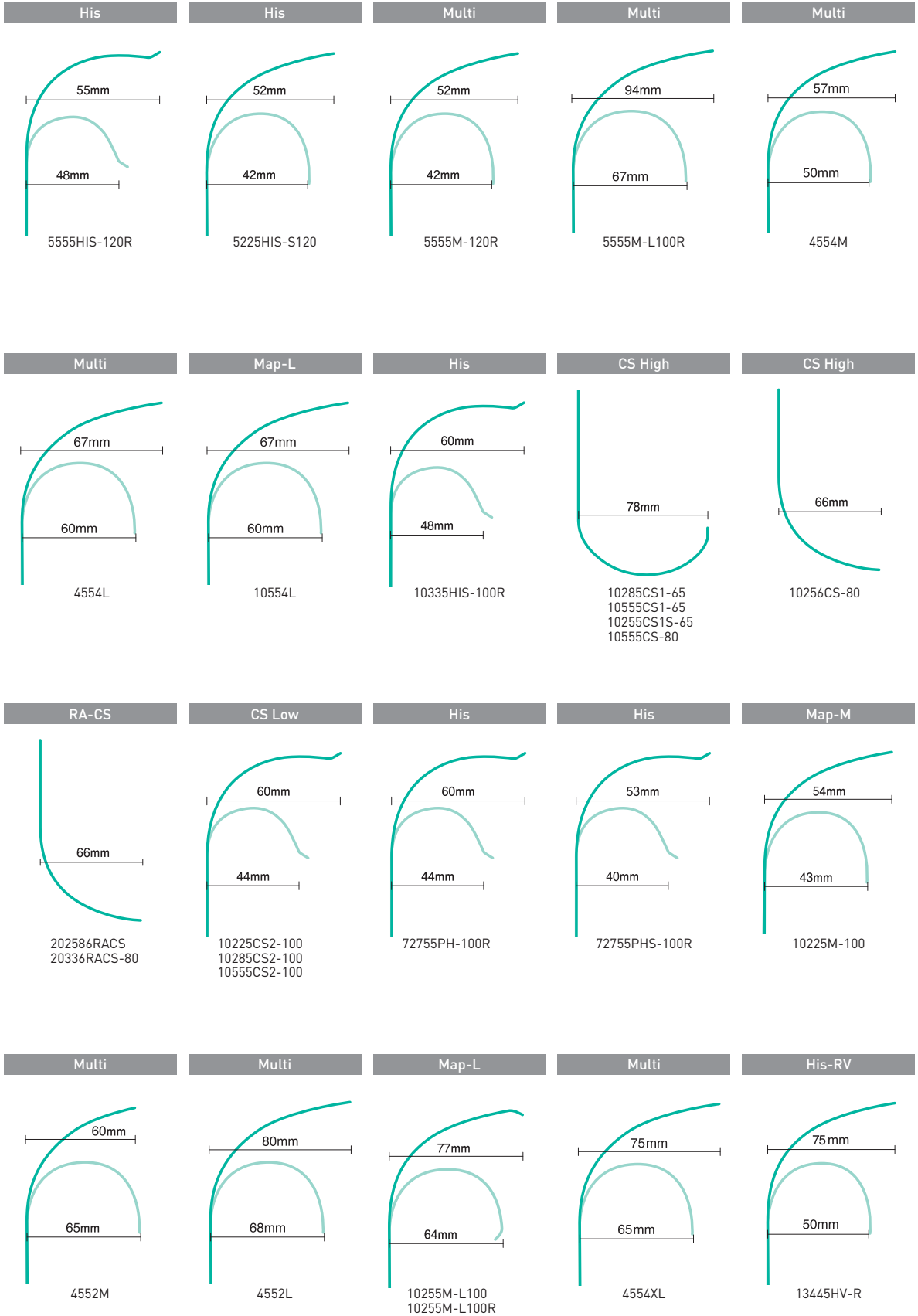


EPstar ELECTRODE CABLE SC				
Model No.	Type	Pins	Usable Length (cm)	Compatible Cable
3010-SC	Sterile	10	250	3010-SCP
3010-SCP	Non-sterile	10	-	3010-SC
3020-SC	Sterile	20	220	3020-SCP
3020-SCP	Non-sterile	20	-	3020-SC

- Non-sterile cable can be used repeatedly without removing it after each procedure. It is designed to reduce the burden during preoperative preparation.
- Both connectors of the sterile cable are interchangeable.
- Only available for decapolar and duodecapolar catheters.



Electrophysiology Catheter Curve Reference



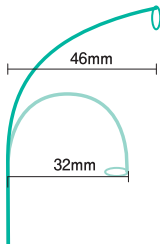
Libero SG / Duodecapolar

Libero SG / Decapolar

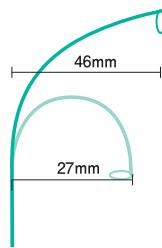
Libero SG / Duodecapolar

Libero SG / Decapolar / F type

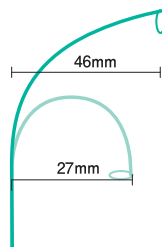
Libero α / Decapolar



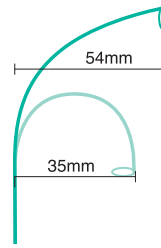
PV2032.5-110



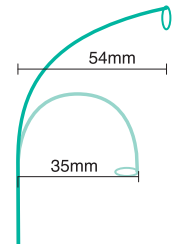
PVI1012.5-110
PVI1015-110
PVI1017.5-110
PVI1020-110
PVI1022.5-110
PVI1025-110



PV2012.5-110
PV2015-110
PV2017.5-110
PV2020-110
PV2022.5-110
PV2025-110
PV2027.5-110

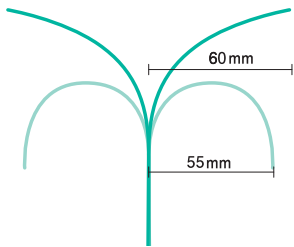


PVI1015-110F
PVI1020-110F



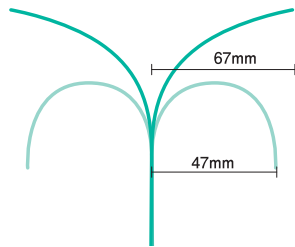
PV1015-110A
PV1017.5-110A
PV1020-110A

Snake / Decapolar / 5F



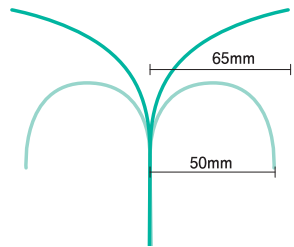
10555BI

Snake / Hexapolar / 6F



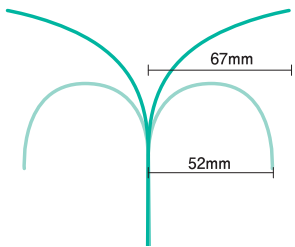
6556BI-100R
6226BI-100R

Snake / Decapolar / 6F



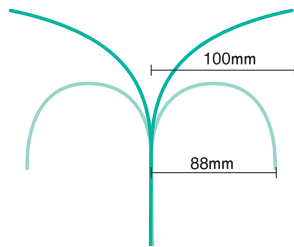
10226BI-100

Snake / Decapolar / 6F



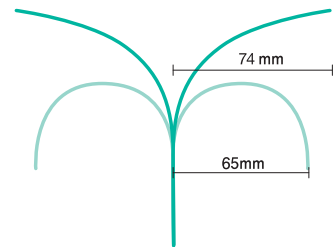
10556BI-100

Snake / Decapolar / 6F



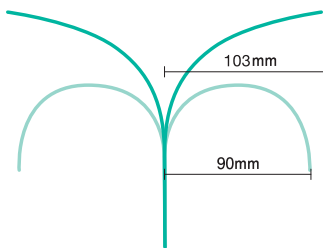
102156BIK1

Snake Duodecapolar / 6F



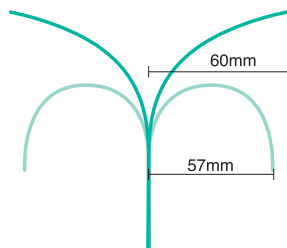
20156BI

Snake / Duodecapolar / 6F



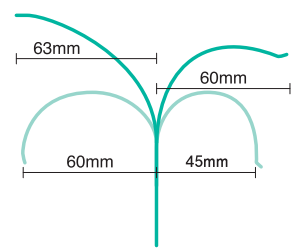
201106BI

Snake Duodecapolar / 6F

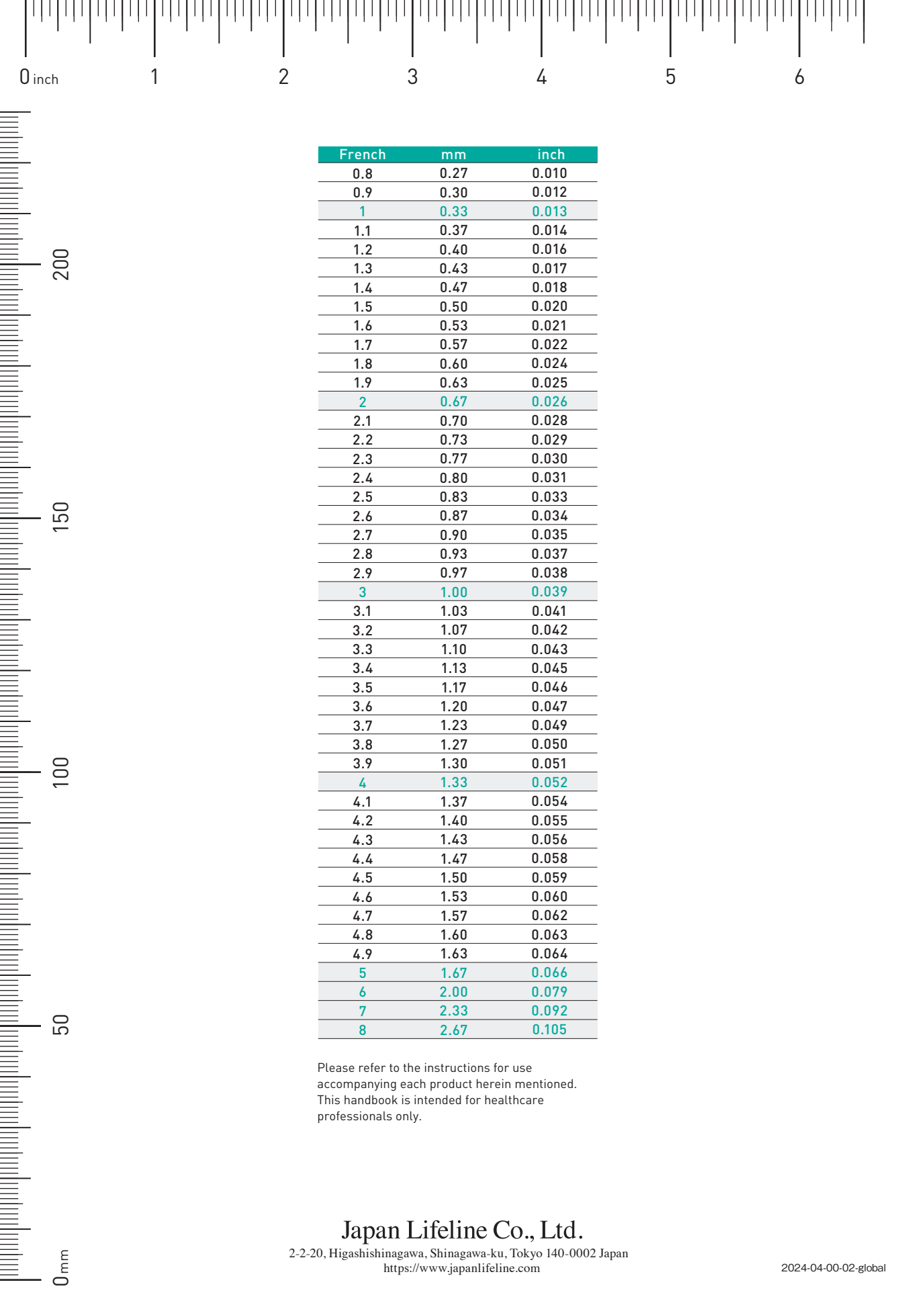


20226BI

Snake / Decapolar / 5F



10555BIAL



French	mm	inch
0.8	0.27	0.010
0.9	0.30	0.012
1	0.33	0.013
1.1	0.37	0.014
1.2	0.40	0.016
1.3	0.43	0.017
1.4	0.47	0.018
1.5	0.50	0.020
1.6	0.53	0.021
1.7	0.57	0.022
1.8	0.60	0.024
1.9	0.63	0.025
2	0.67	0.026
2.1	0.70	0.028
2.2	0.73	0.029
2.3	0.77	0.030
2.4	0.80	0.031
2.5	0.83	0.033
2.6	0.87	0.034
2.7	0.90	0.035
2.8	0.93	0.037
2.9	0.97	0.038
3	1.00	0.039
3.1	1.03	0.041
3.2	1.07	0.042
3.3	1.10	0.043
3.4	1.13	0.045
3.5	1.17	0.046
3.6	1.20	0.047
3.7	1.23	0.049
3.8	1.27	0.050
3.9	1.30	0.051
4	1.33	0.052
4.1	1.37	0.054
4.2	1.40	0.055
4.3	1.43	0.056
4.4	1.47	0.058
4.5	1.50	0.059
4.6	1.53	0.060
4.7	1.57	0.062
4.8	1.60	0.063
4.9	1.63	0.064
5	1.67	0.066
6	2.00	0.079
7	2.33	0.092
8	2.67	0.105

Please refer to the instructions for use accompanying each product herein mentioned. This handbook is intended for healthcare professionals only.

Japan Lifeline Co., Ltd.

2-2-20, Higashishinagawa, Shinagawa-ku, Tokyo 140-0002 Japan

<https://www.japanlifeline.com>

2024-04-00-02-global